



**Construction
Industry
Gypsum
Retarders**

Lohtragon®

Crystallizing Solutions

Info Sheet Lohtragon®

Construction Industry – Gypsum

Construction chemicals are used with building materials such as cement and gypsum in order to optimize these formulations. The Lohtragon® metal salt range focuses on the following applications for the construction industry:

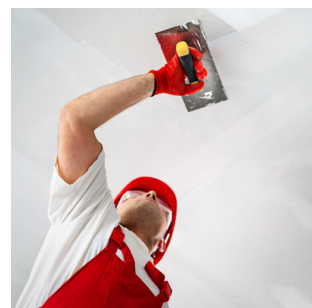
- ◆ Admixtures for cement (accelerators and retarders)
- ◆ Chromate reducing agents
- ◆ Retarders and crystal morphology modifiers for gypsum

Lohtragon® Info Sheets are available for each of these topics. Please get in touch with us for further details or discussing your individual challenge.

Retarders for Gypsum

The hardening time of non-retarded gypsum is just a few minutes, making careful processing almost impossible. Therefore, gypsum-based systems generally require retarders. For this purpose, the Lohtragon® range offers a selection of fine-grained products compatible with gypsum and adjusting the hardening time to the required level.

Gypsum formulations are efficiently processed by using our Lohtragon® B09 metal salt, which is universally applicable for all types of gypsum systems in an economic dosage level for the desired setting time window. The extremely small grain size allows the fine powder to flow very evenly and prevent segregation.



Features & Benefits

The features and benefits of Lohtragon® B09:

- ◆ Universal: Can be used for all types of gypsum plasters
- ◆ Flexible: Setting the period of plasticity to ensure flexible post-processing
- ◆ Economic: Dosage range of 0.01-0.25 %
- ◆ Homogeneous: Fine particles prevent segregation and ensure homogeneous distribution

Crystal Morphology Modifier for Gypsum

Within the range of building plasters the hemihydrate of gypsum is of great importance. This gypsum type predominantly occurs in two modifications, alpha and beta, which are chemically the same while differing significantly in their crystal structure. The alpha gypsum version is more compact and forms larger primary needle-shaped crystals and therefore results in a final structure with much higher mechanical strength.

Features & Benefits

You benefit from using the Lohtragon® B45 as chemically pure crystals by a target-oriented steering of the crystal morphology of the alpha gypsum. In addition you can establish an efficient process by using the aqueous solution of Lohtragon® B45 which allows easy handling and exact dosing.

The features and benefits of Lohtragon® B45:

- ◆ Used to steer the crystal morphology of alpha gypsum while crystallizing
- ◆ Influences the mechanical strength of hydrated gypsum
- ◆ Can be used as powder or as drop in solution for very exact dosing

Contact

Connect directly with our Lohtragon® experts in our German headquarter.



+49 5155 63-5888



contact@lohtragon.com



www.lohtragon.com

Lohtragon® – A Brand of Dr. Paul Lohmann®

For over 135 years, the company Dr. Paul Lohmann has been able to establish and maintain its leading position as an international manufacturer of mineral and metal salts that meet the highest quality standards. The product range includes over 400 different salts, from Aluminum to Zinc, in a total of over 7,000 different specifications.

Dr. Paul Lohmann® supplies its specialty salts worldwide to customers in the pharmaceutical industry, food sector, food supplements, cosmetics and – under the Lohtragon® brand – to customers in industrial applications.

Lohtragon® represents unique competencies in manufacturing, optimization and development of metal salts for a wide variety of industrial market segments. Tailor-made for your application and your process - our solution to your challenges!

Established Products

By choosing Lohtragon® products, you benefit from direct manufacturer sourcing and our “Made in Germany” quality and reliability promise.

Joint Developments

From concept phase to tailored product optimization, we are your partner to solve any development challenge.

Expert Services

Rely on services from our R&D, application technology, regulatory affairs, logistics, quality departments and more. We fully support you in all areas.